

Baumschlager
Eberle
Architects

Baumschlager-Eberle Group

Office Lochau

Founded in 1985 by Carlo Baumschlager
and Dietmar Eberle, 28 employees

Office Vaduz

Founded in 1999, 17 employees

Office Vienna

Founded in 2001 as partnership
with Itten+Brechbühl, 33 employees

Office Beijing

Founded in 2004, 12 employees

Office St. Gallen

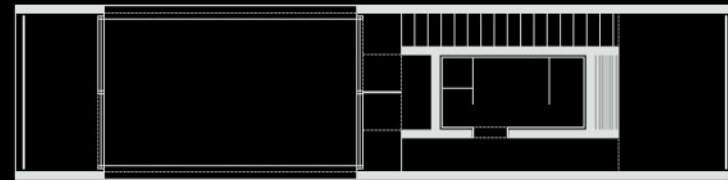
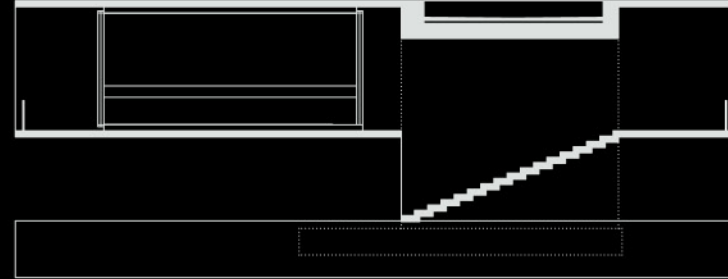
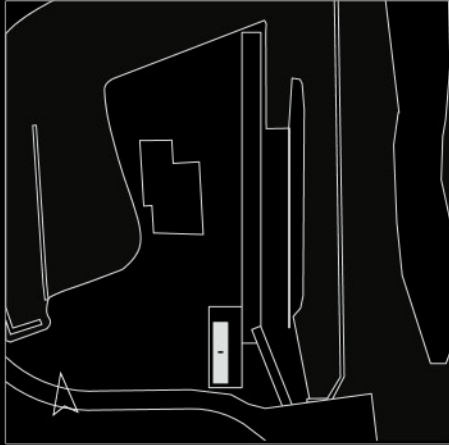
Founded in 2006, 18 employees

Office Zürich

Founded in 2007, 6 employees



Rohner Port Building
Fussach, Austria

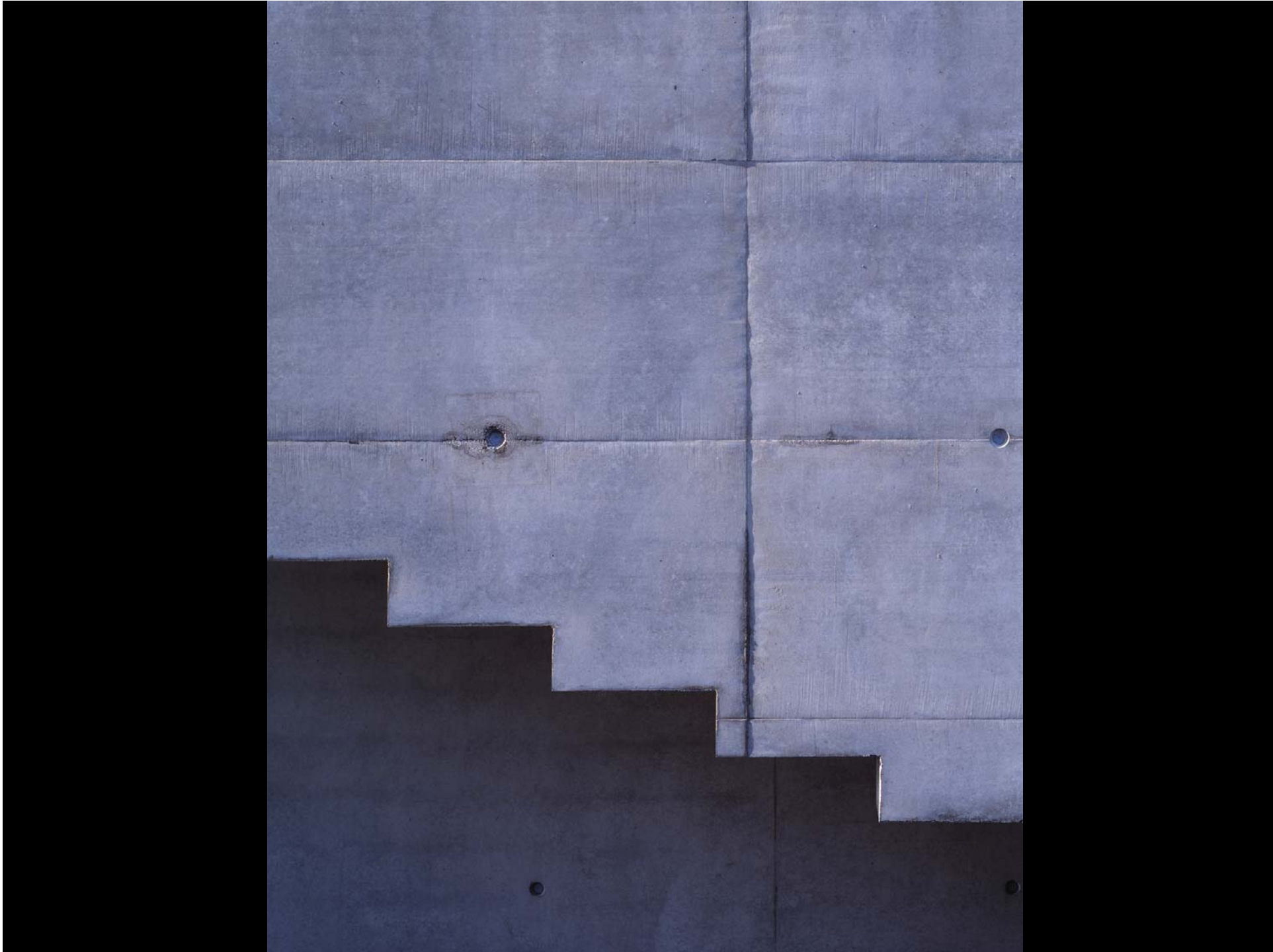


Rohner Port Building
Fussach, Austria

0 1 5 10 m
Top floor and section



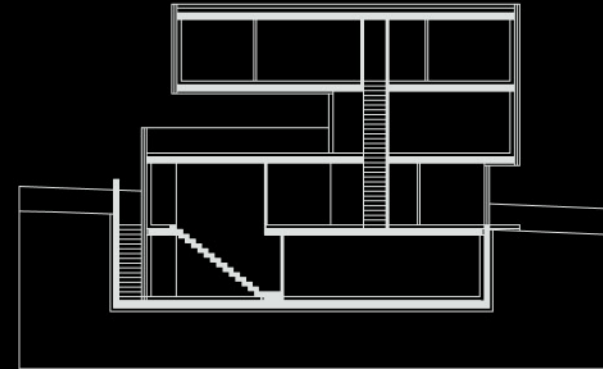
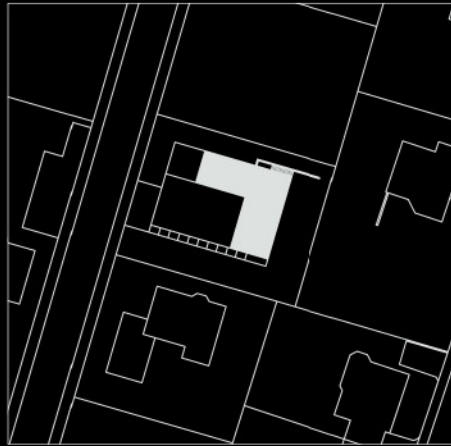












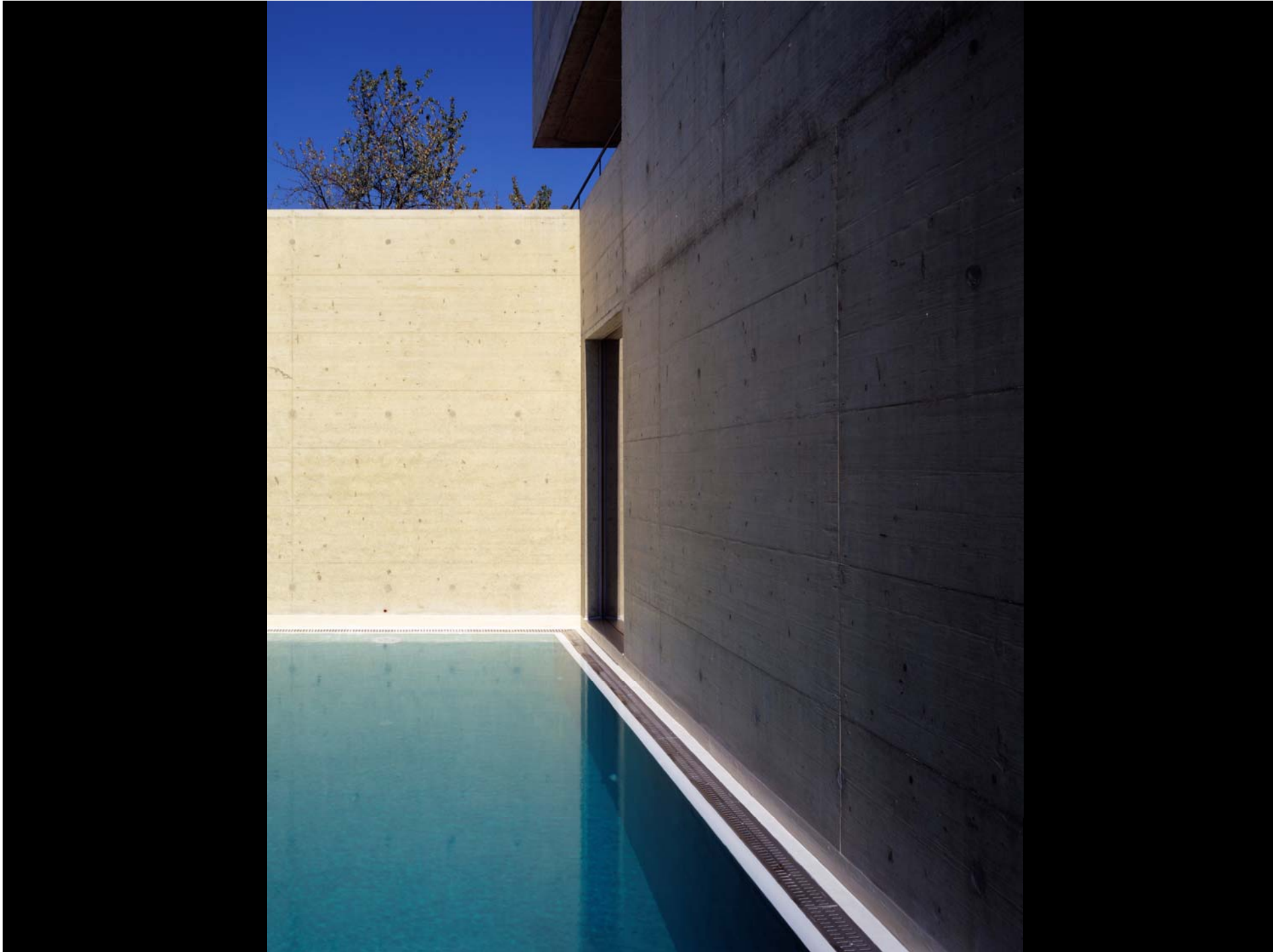
One-Family House Flatz
Schaan, Principality of Liechtenstein

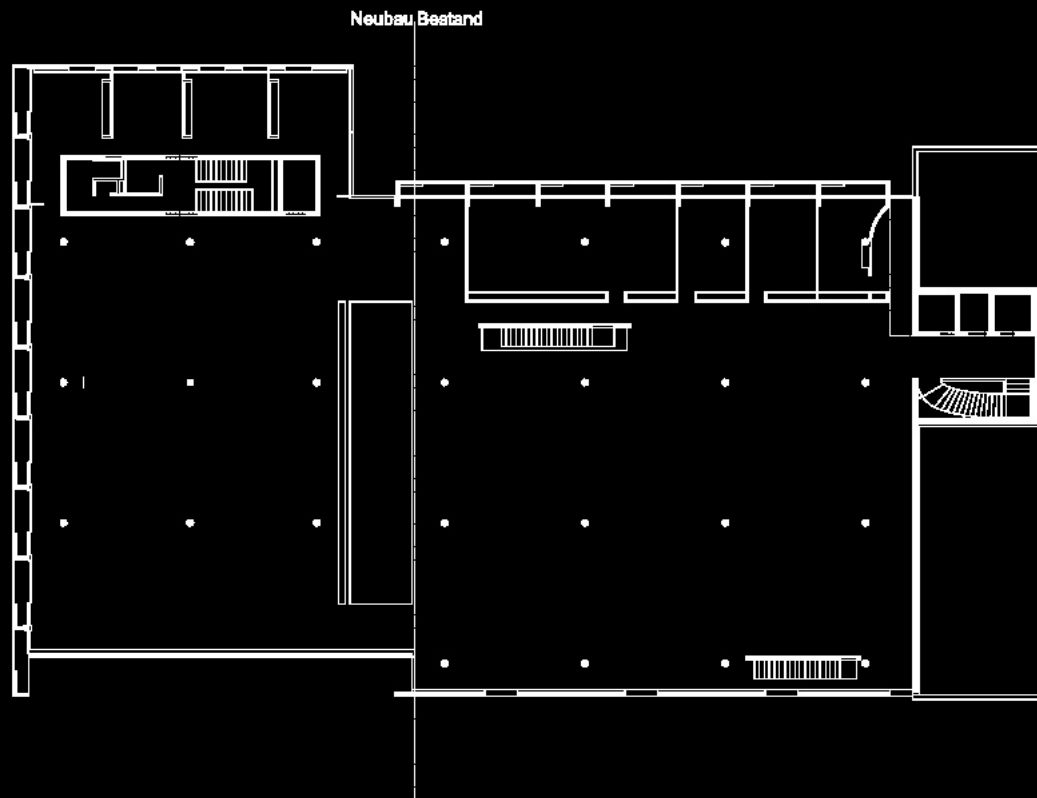
0 5 10 15 m
Ground floor and section



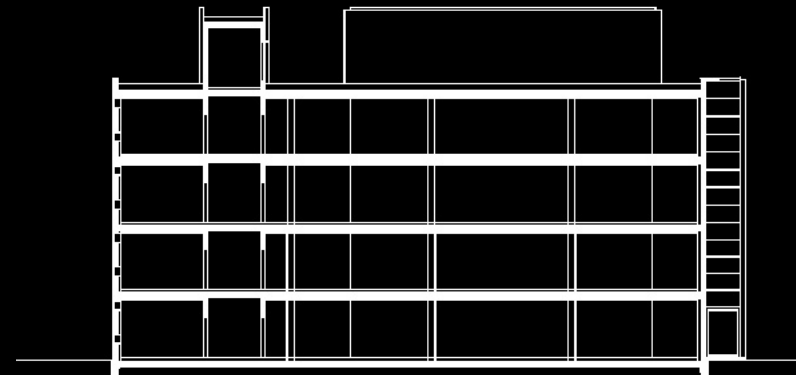








LGT Lagertechnik
Wolfurt, Austria











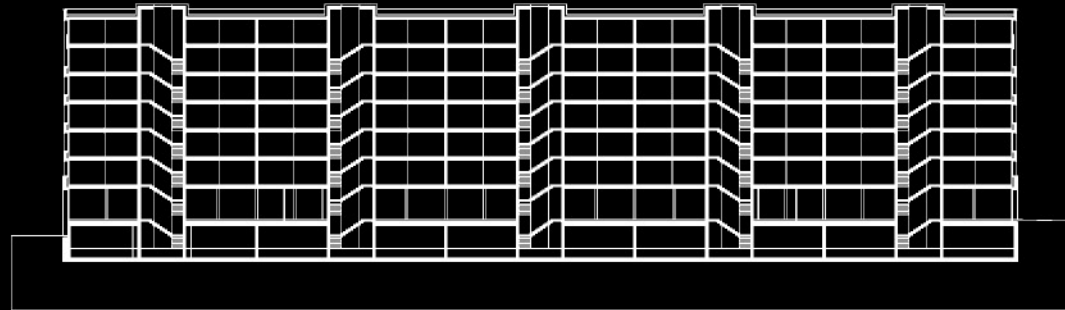
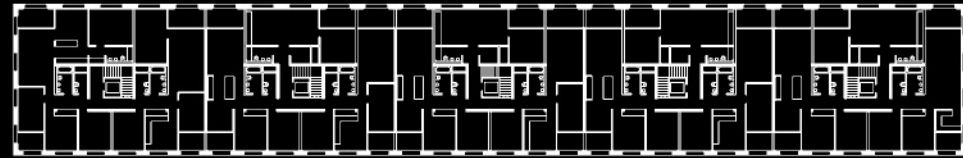
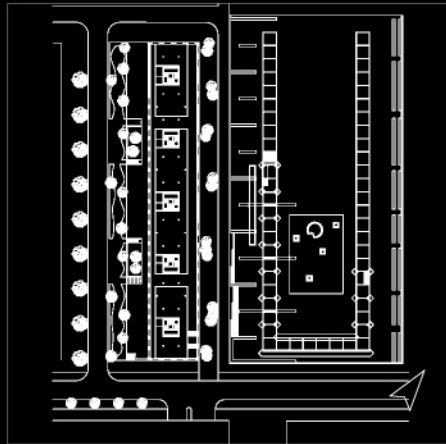












Ententeich
Zurich-Oerlikon, Switzerland

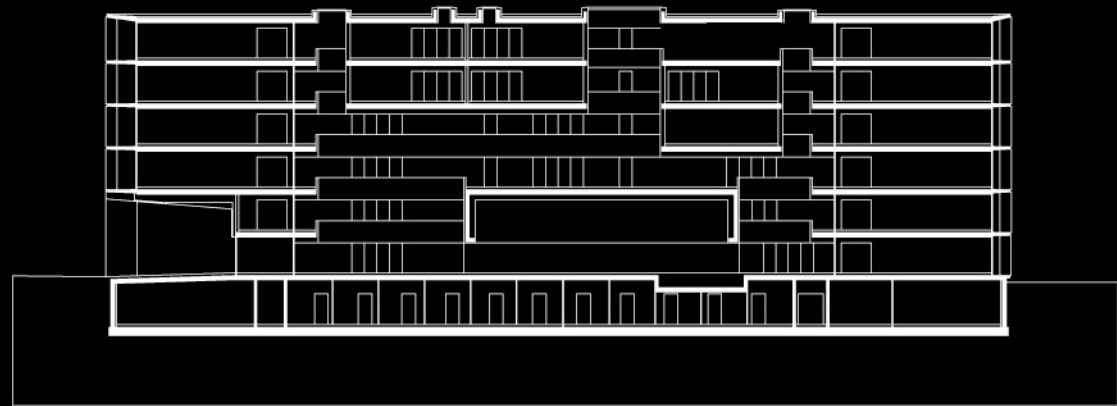
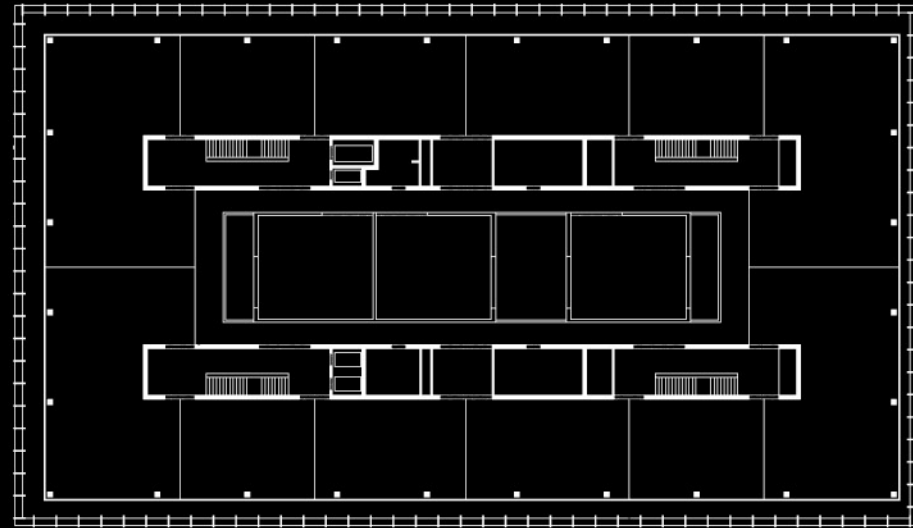
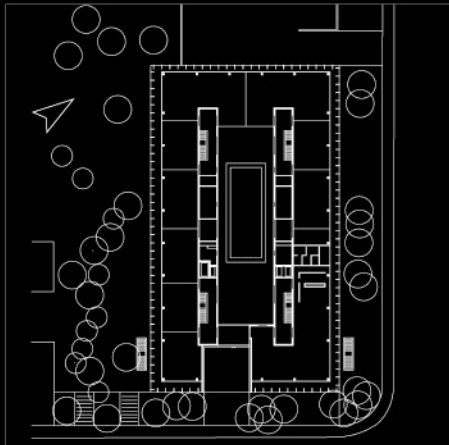
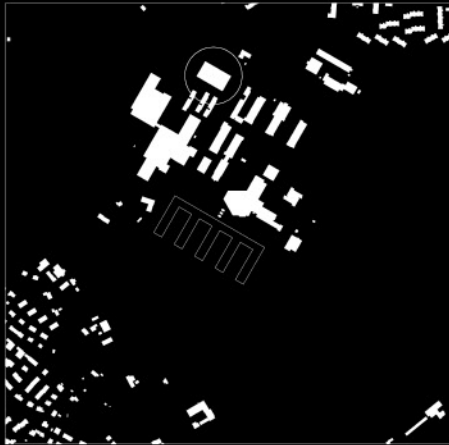
0 10 40 m

Section und typical floor





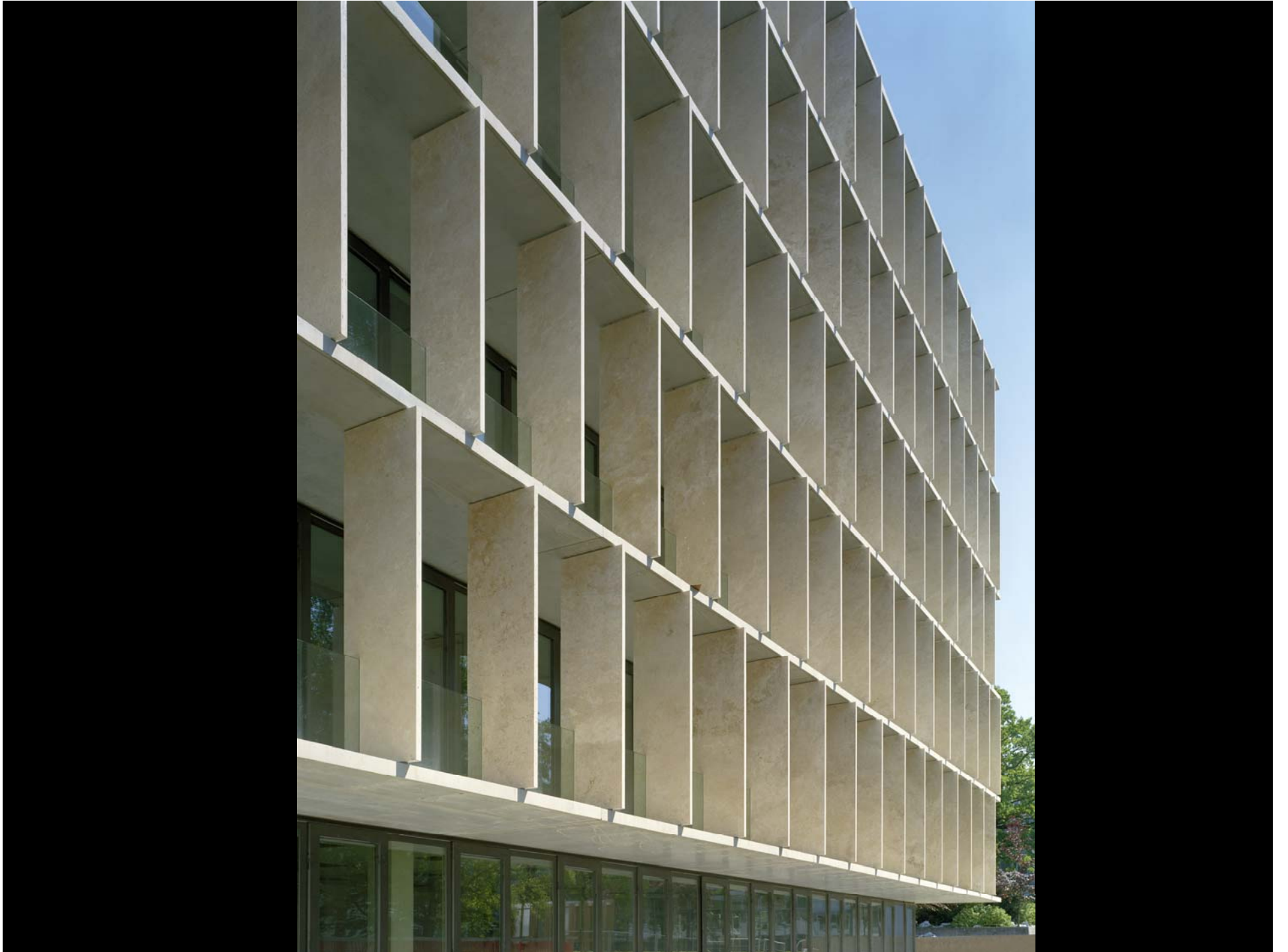




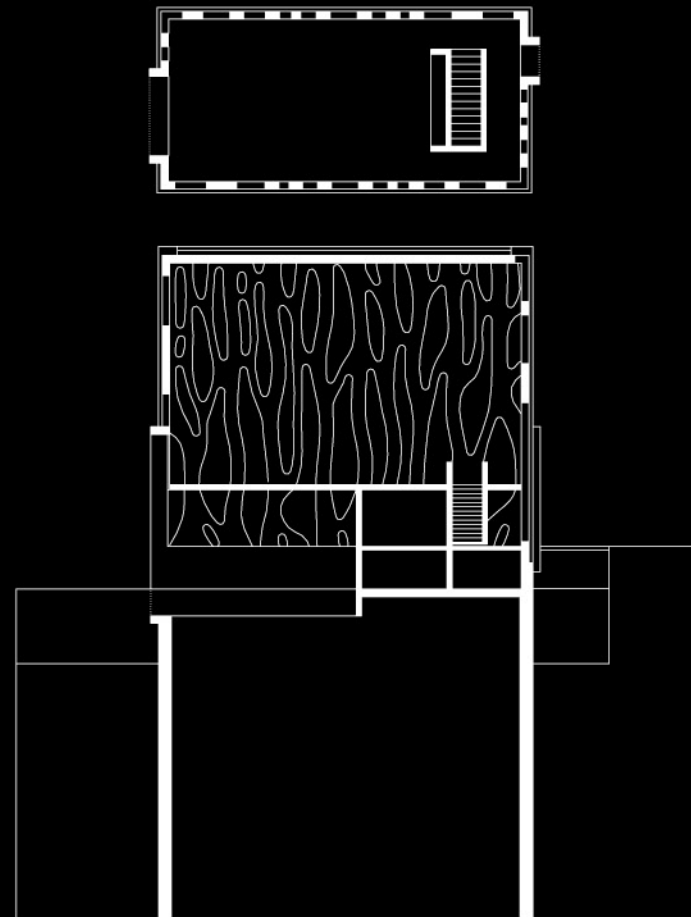
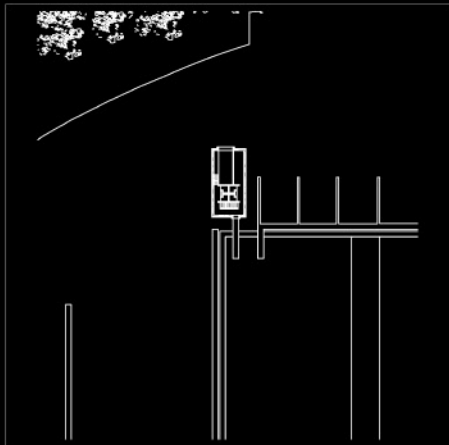
ETH e-Science Lab, HIT New Building
Zurich, Switzerland

0 10 30 m
Typical floor and section









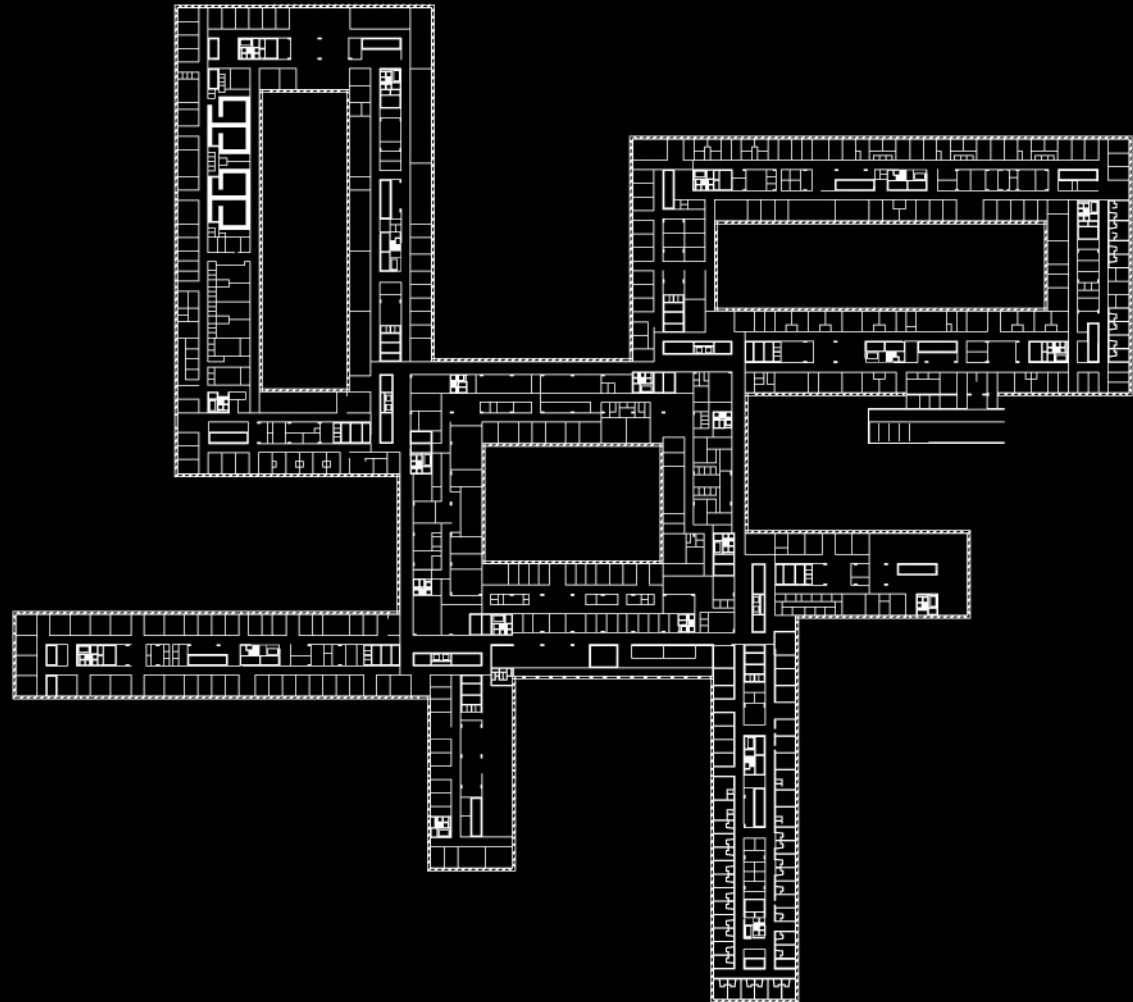
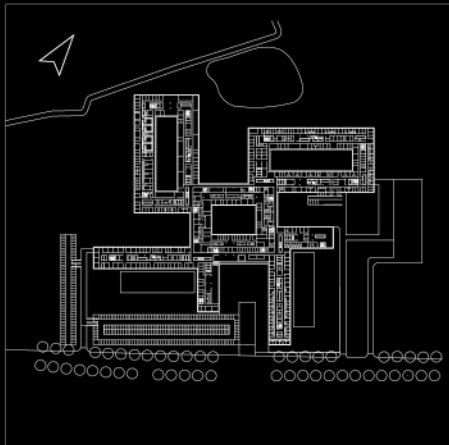
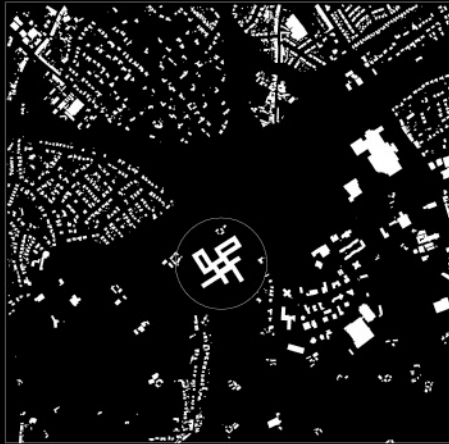
Clubhouse Rohner
Fußach, Austria

0 5 10 15 m
Typical floor and section









Hospital AZ Groeninge
Kortrijk, Belgium

0 20 100 m

Typical floor and section









www.baumschlager-eberle.com
pr@baumschlager-eberle.com

Photography Eduard Hueber